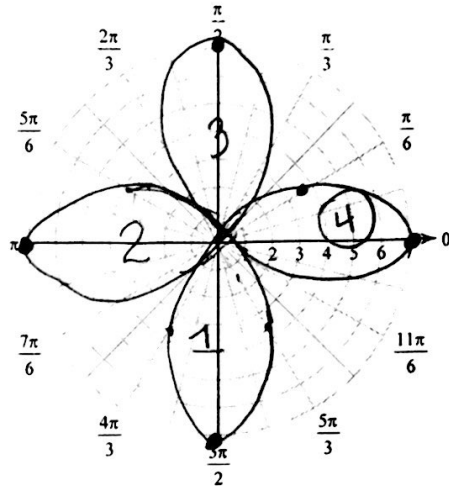
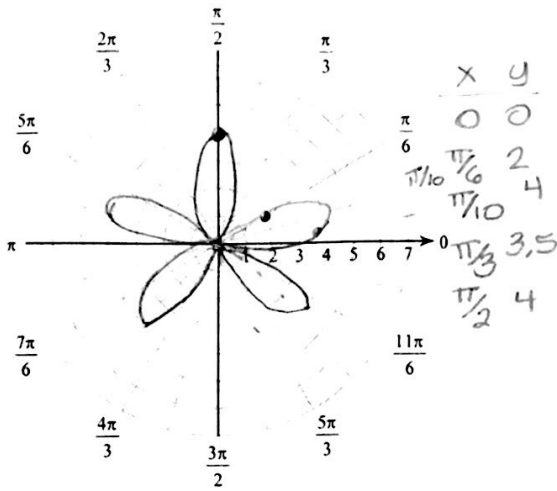


Graphing Polar Practice

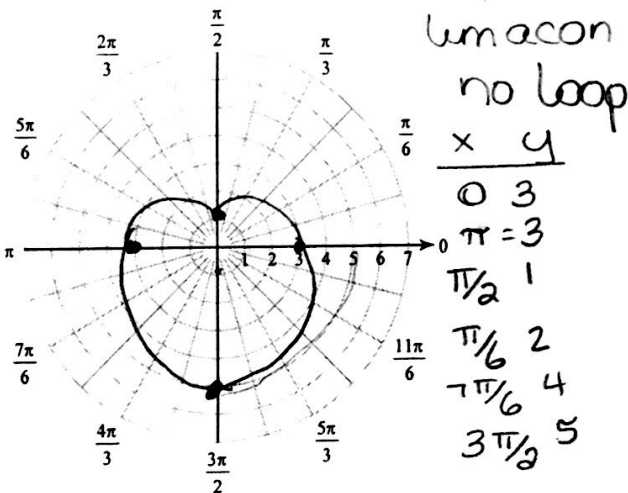
Consider each polar equation. Classify the curve; and sketch the graph.

1) $r = 4\sin(5\theta)$

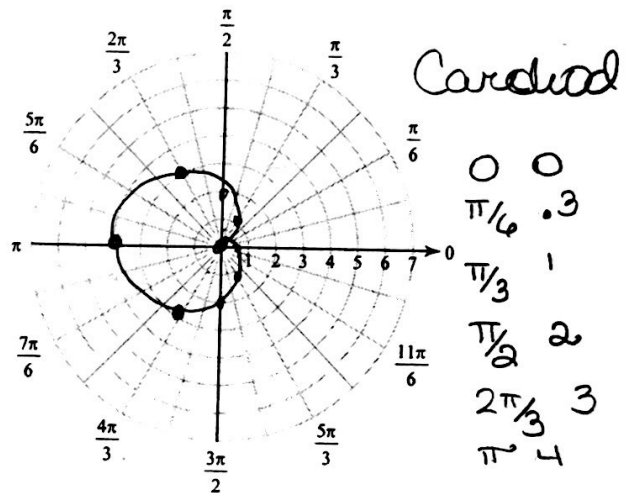
rose 5 petals



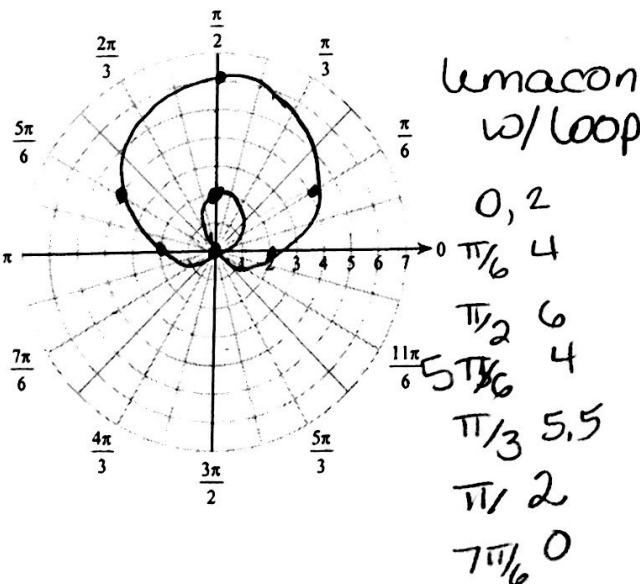
3) $r = 3 - 2\sin\theta$



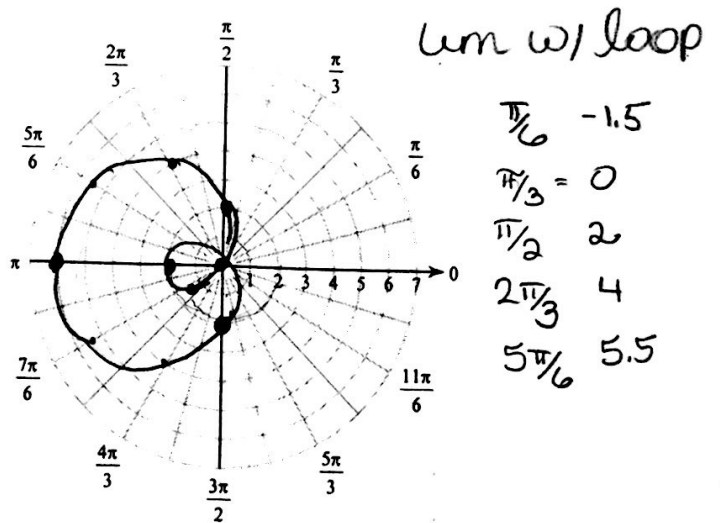
5) $r = 2 - 2\cos\theta$



4) $r = 2 + 4\sin\theta$

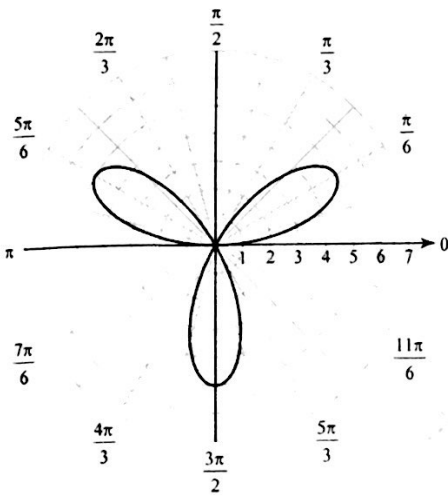


6) $r = 2 - 4\cos\theta$

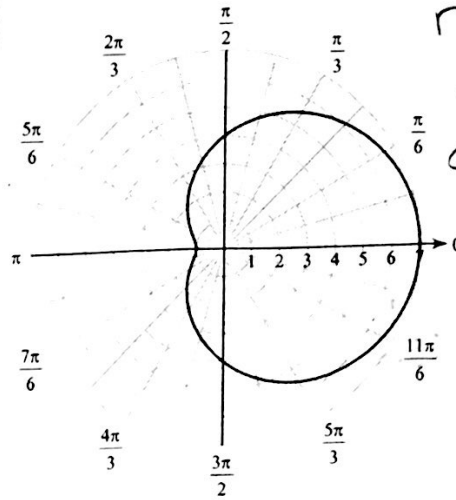


Consider each polar graph. Classify the curve; and write the equation.

7)



$$r = 5 \sin(3\theta)$$



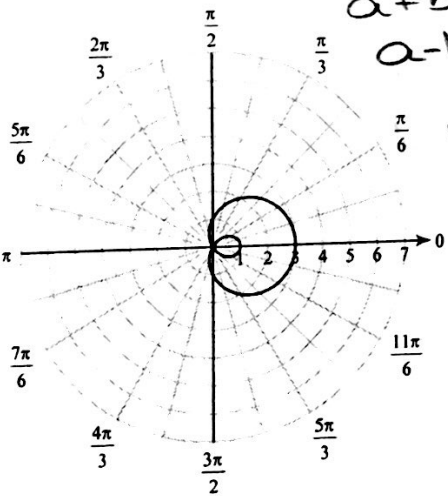
$$r = 4 + 3 \cos \theta$$

$$a > b$$

$$a + b = 7$$

$$a - b = 1$$

9)



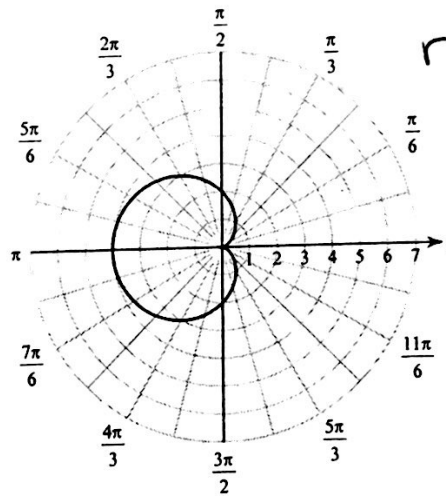
$$a < b$$

$$a + b = 3$$

$$a - b = 1$$

$$r = 1 + 2 \cos \theta$$

10)



$$a = b$$

$$a + b = 4$$

$$r = 2 - 2 \cos \theta$$