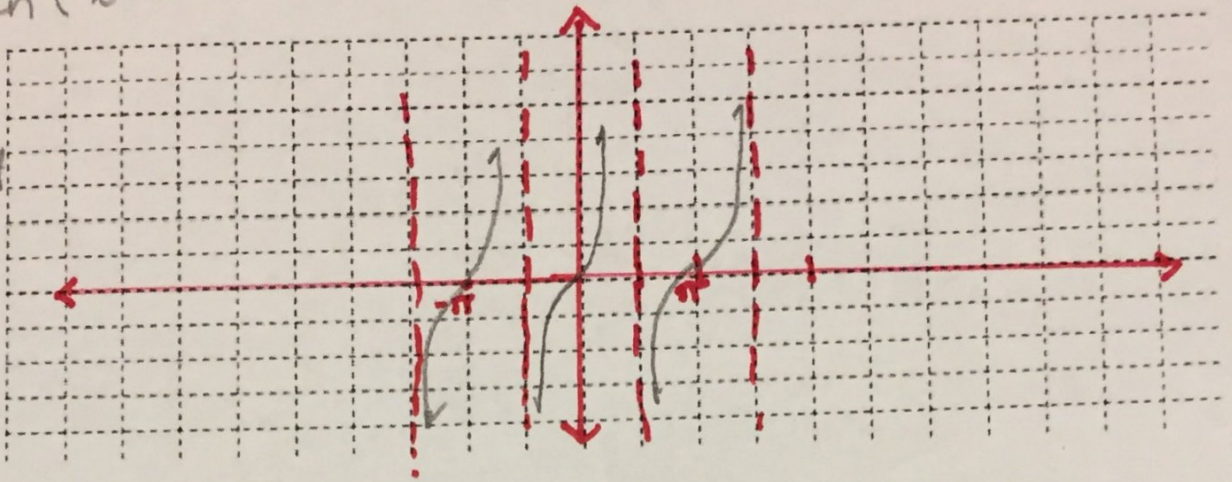


Pg. 418

19.) $y = \tan(x - \pi)$

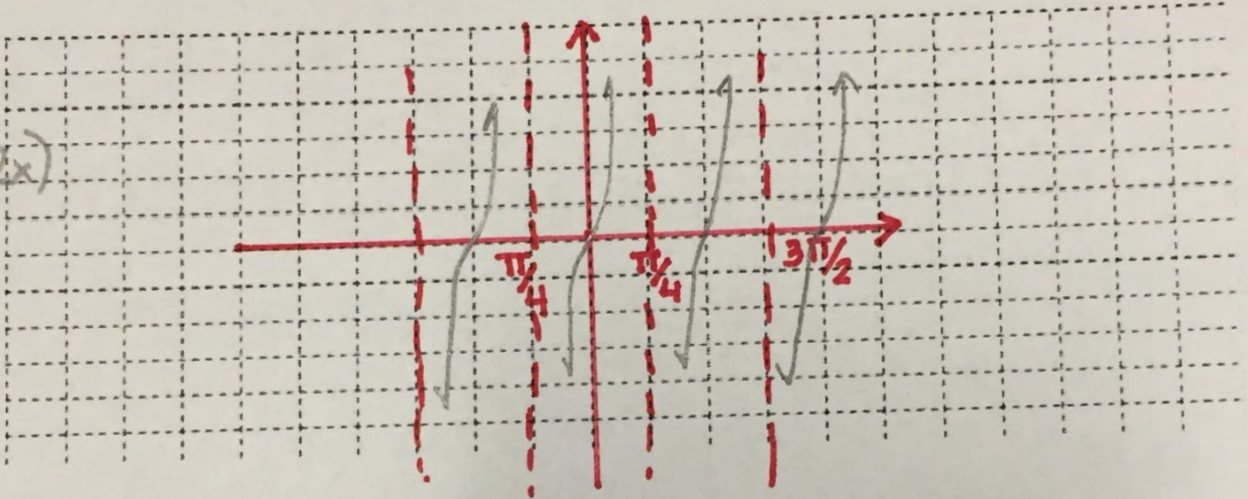
Pd: π
Ps: π right



21.)

$y = 3 \tan(2x)$

Pd: $\frac{\pi}{2}$
a: B



22.)

$y = 4 \tan(\frac{1}{2}x)$

Pd: $\frac{\pi}{\frac{1}{2}} = 2\pi$
a: 4

